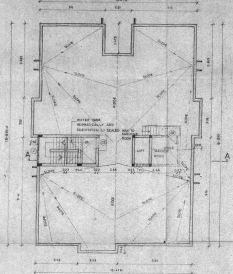
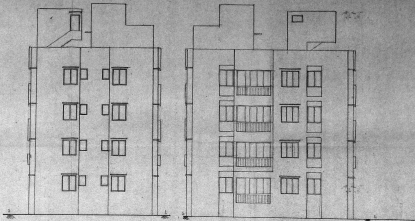


SECTION OF FOUNDATION & COMPOUND WALL

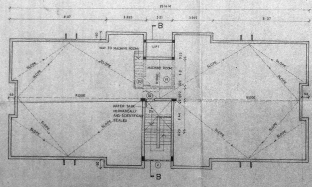


TERRACE FLOOR PLAN (BLOCK-A)

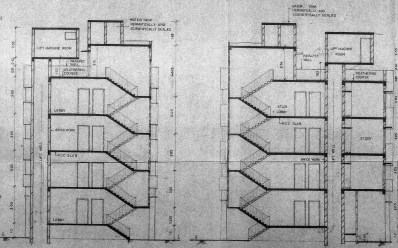


FRONT ELEVATION (BLOCK-B)

FRONT ELEVATION (BLOCK-A)



TERRACE FLOOR PLAN (BLOCK-B)



SECTION-BB

SECTION-A-A

MMDA BU/PP No. 1
 C.A. 01/10/1979
 APPROVED
 PART I
 A.M. D.P.

REVISION
 1-SECTION 'A-A' SECTION OF A FRONT ELEVATION
 BLOCK 'A' D.P. (C) HAVE BEEN ADVISED

DATE: 1 11 79
 DRAWN BY: S. S. SURESH
 CHECKED BY: S. S. SURESH

PROPOSED CONSTRUCTION OF FLATS AT DOOR NO. 20 & 26, GOPALAMENON ROAD, & ANDBARABAD 1 STREET, KODAMBARKAM, MADRAS-600 026. T. & NO. 25 & 41. PLOT NO. 11 & 9, BLOCK NO. 32. TALUK. EGMORE, MUMBAIBARKAM CORPORATION REVENUE DIVISION NO. 116 RANGE - X II

COLOR INDEX	AREA STATEMENT
PROPOSED CONSTRUCTION	PLOT AREA 1007.78 m ²
IMPROVED OF SITE	PROPOSED CONSTRUCTION 3305.03 m ²
ROAD	

APPROVED
 11/11/1979
 MUNICIPAL ENGINEER

APPROVED
 11/11/1979
 MUNICIPAL ENGINEER

ALACRITY FOUNDATIONS PRIVATE
 105, VEENILLA PAL STREET
 T. NAGAR
 MADRAS - 600 077
 SHEET NO. 2/2

